

Coastline Elderly Services, Inc.

Area Agency on Aging

and

Aging Services Access Point

2009 Needs Assessment of Older People

Serving the communities of:
Acushnet, Dartmouth, Fairhaven, Gosnold, Marion, Mattapoisett,
New Bedford and Rochester

FOREWORD

Coastline Elderly Services, Inc., Area Agency on Aging (AAA) and Aging Services Access Point (ASAP), is responsible for the distribution of federal funds to support programs and services under the Older Americans Act of 1965, as amended. These funds are targeted to elders who are 60 years of age and older, including caregivers, throughout communities of our planning and service area.

As the region's Area Agency on Aging, we are required to solicit information from individuals throughout the communities we serve, by conducting an assessment of the needs of older people. This information is compiled and included in a Four-Year Area Plan which serves as a guide for the implementation of programs and services throughout the communities. Results from the 2009 survey will be used to develop Coastline's 2010-2013 Area Plan on Aging.

In January 2008, twenty-three AAAs across the state, along with the Massachusetts Executive Office of Elder Affairs (ELD), began the process of developing the Needs Assessment survey to reach individuals in all 351 cities and towns throughout the Commonwealth. Various approaches were selected from among the AAAs and ELD in developing questionnaires for dissemination. To name a few, some agencies chose public hearings, focus groups, task force, mailing surveys to households, one-on-one interviews, or posting the survey on the web to gather input from individuals.

Coastline disseminated 450 questionnaires through mail and contact with the elders by phone. The number of elders for sampling was selected by dividing the total number of elders (34,018) throughout the planning and service area by $(y=75)$. In this survey, the number in the symbol $(N=)$ following the percentage represents the denominator used in the calculation of the percentage, unless the denominator equals the total sample size. Questionnaires were mailed in October 2008. A total of 213 households responded which resulted in a 47.33% response rate. A copy of the survey tool is included in the Appendices of this report.

This year's report incorporates results from similar surveys conducted in 2001 and 2005 from Coastline, including statistical data obtained from numerous sources including state data from the 2009 needs assessment study and 2007 census estimates. In some instances, certain areas of this report focused on respondents between the ages of 75-79, due to an increase in this age bracket of the elderly population, as identified in the 2009 survey.

This report reflects the Area Agency on Aging's commitment in identifying pertinent data that can aid in the development of new programs and services to our areas' elders and caregivers.

Ann McCrillis
Area Agency on Aging Planner

About This Report

Accuracy of the Estimates

Some data in this report is based on a sample of the population and is, therefore, subject to sampling error. The data in some indicators may not sum to totals because of rounding. All demographic and population data is U.S. Census Data unless otherwise noted. All data is from the Year 2000 unless otherwise noted. Data accuracy is not guaranteed. Please verify any data questions with the U.S. Census Bureau.

Needs Assessment – The process of identifying the incidence, prevalence and nature of certain conditions within a target group.

It attempts to define what is required to insure a population is able to function at an acceptable level (value laden).

It is an integral part of a planning process to assess and define community needs.

A way of looking at a situation which improves information to enable planners to make suggestions about ways to improve a situation.

What is a Need? – Needs are social definitions representing what a person or group requires in order to play a role, meet a commitment, participate in a social process, and retain adequate level of energy and productivity.

Perceived Need:	Felt
Normative Need:	Reflects “normal standards, value laden, shaped by environment.”
Expressed Need:	Based on those who seek services; consumers and potential consumers.
Relative Need:	Seek equity of services between geographic areas.

Needs Assessment minimally should study:

1. Who is in need?
2. What is lacking or needed?
3. What are the goods/services needed?
4. How much of each good/service is needed?
5. Is the problem supply and demand or access and distribution?
6. What is not needed or less needed?
7. What will it cost to provide?
8. How can it be funded?

Acknowledgements

Our sincere gratitude to our staff, volunteer, and interns, who assisted us with the Needs Assessment study.

- *Mikele M. Gamboa*, SW, intern, Bridgewater State College, painstakingly made numerous phone calls to individuals to complete the survey by phone.
- *Joan Stratton*, MSW, intern, Bridgewater State College, conducted the focus group on the needs of the Lesbian, Gay, Bisexual and Transgender elders.
- *Liberia Costa (Libby)*, Coastline's Family Caregiver Support Program Coordinator, conducted the focus group on the needs of caregivers.
- Last, but not least, the AAA volunteer, *Michael Voss*, who assisted in compiling the survey data and calculated statistical results in pre-identified categories.

Table of Contents

Foreword	i
About This Report.....	ii
Acknowledgements	iii
Local Community Need	1
Elders Skipped Necessities	2
Older Americans in the Planning and Service Area	3
Increase in Elders Living to Age 85+	4
60+ Population by Age Group in the Planning and Service Area	5
Age 60 + by Race and Town	6
Gender Comparison in the 60 + Population.....	7
Living Situation-Elders Living Alone	8
Housing Status	9
Number of People Living In The Household	10
Household Income	11
2008 Health and Human Services Poverty Guidelines.....	12
Labor Force Participation.....	13
Caregiving.....	14
Stakeholders.....	16
Lesbian, Gay, Bisexual and Transgender Elders	17
Community Profile 2007 and 2000 Comparison	18
Appendices.....	19
Appendix 1: 2009 Health and Human Services Poverty Guidelines	
Appendix 2: The 2009 Needs Assessment of Older People Cover Page	
Appendix 3: The 2009 Needs Assessment of Older People	

Local Community Need

In determining the needs, respondents were asked to select from among three categories in areas where they may have difficulties in finding assistance. Coping with depressing mood ranked first place at 13.1%. Over 9% of elders polled also said they needed assistance in coping with memory loss/confusion, and finding leisure, recreation and fitness programs.

Table 1.1

	First Priority	Second Priority	Third Priority
Finding affordable housing	9.4%	-	.5%
Finding caregiver support	5.2%	1.4%	.5%
Coping with depressing moods	13.1%	2.8%	1.4%
Coping with memory loss/confusion	9.4%	1.5%	.5%
Coping with abuse, neglect and mistreatment	1.9%	1.4%	.5%
Finding employment	3.3%	-	.5%
Finding education/learning	5.2%	-	.5%
Finding health care information	4.7%	1.4%	.5%
Improving Food and nutrition	8.5%	2.3%	.9%
Finding information / assistance to avoid foreclosure and eviction	2.8%	-	.5%
Finding legal assistance	3.3%	1.4%	.5%
Finding leisure, recreation and fitness	9.4%	2.8%	.9%
Finding long-term care information and assistance	4.7%	-	.5%
Managing money/finances	8.0%	.9%	.5%
Finding medical escort	4.7%	.5%	.5%
Finding programs / services for LGBT elders (Lesbian, Gay, Bisexual, Transgender)	2.8%	-	.5%
Finding transportation	8.5%	.9%	.5%
Finding volunteer opportunities	6.1%	.5%	.5%

ELDERS SKIPPED NECESSITIES

Survey respondents were asked to identify if they had skipped necessities within the last 12 months because of a shortage of money.

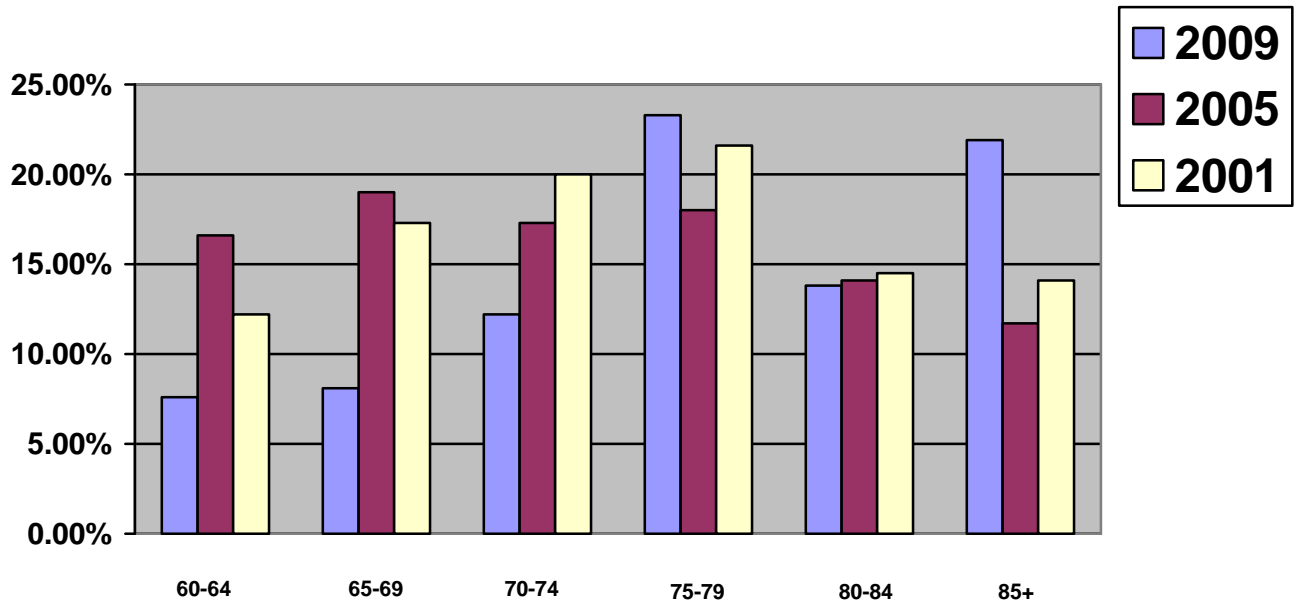
From the results obtained, 15.3% of elders said they were unable to pay for utilities, and 13.3% said they went without food and prescription drugs.

Table 1.2

Essentials	Percentage of those who skipped necessities
Food	13.3%
Gas for car	9.7%
Home repairs	14.3%
Utilities	15.3%
Prescription drug	13.3%
Paying for Transportation	7.1%
Medical appointment	9.7%
Social gathering	13.3%
Rent or mortgage	4.1%

(N=196)

Older Americans in the Planning and Service Area



2009 (N=210): 2005 (N=196): 2001 (N=254):

The 2009 survey revealed that the age group between 75-79 had increased to 23.3%, including the 85+ population which also had seen an increase to 21.9%.

The projected growth in the older population is expected to raise the median age of the U.S. population to 42 by the year 2030, and to 43 in 2040. By 2030 the 65+ population is expected to more than double increasing from 35 million in 2000 to 40 million in 2010.

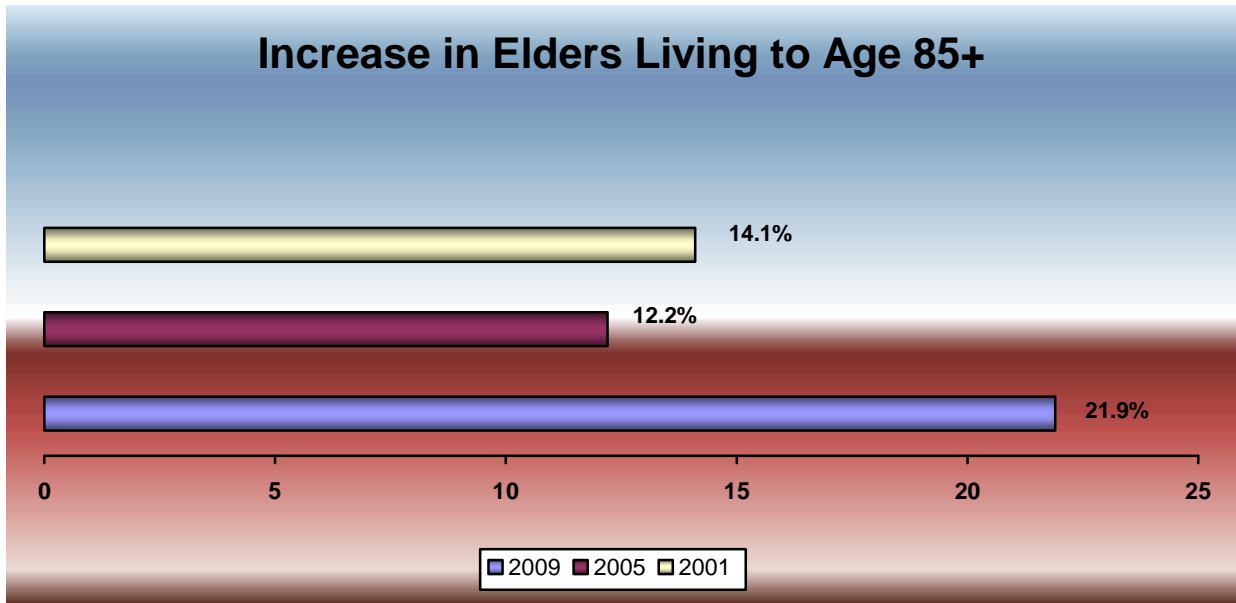
Note: Data is based on an 8-year average.

Reference population: This data refers to the civilian non-institutionalized population.

Source: 2009, 2005, 2001 Needs Assessment of Older People – Coastline Elderly Services, Inc.

U.S. Census Bureau: Population Estimates and Projections

Older Americans 2008: Key Indicators of Well-Being: Federal Interagency Forum on Aging Related Statistics.



Nearly 22% of elders responding to the survey were 85 years of age and older.

According to the U.S. Census Bureau, the population age 85 and over could grow from 5.3 million in 2006 to nearly 21 million by 2050.

Researchers have predicted that death rates at older ages will decline more rapidly than is reflected in the U.S. Census Bureau's projections, which could lead to faster growth of this population.

Americans are living longer. Life expectancies at both age 65 and 85 have increased. Researchers say that under current mortality conditions, people who survive to age 65 can expect to live an average of 18.7 more years, almost 7 years longer than people age 65 in 1900. The life expectancy of people who survive to age 85 today is 7.2 years for women and 6.1 years for men.

Note: Data is based on an 8-year average.

Reference population: This data refers to the civilian non-institutionalized population.

Source: 2009, 2005, 2001 *Needs Assessment of Older People* – Coastline Elderly Services, Inc.

U.S. Census Bureau: *Population Estimates and Projections*

Older Americans 2008: *Key Indicators of Well-Being*: Federal Interagency Forum on Aging Related Statistics.

60 + Population by Age Group in Planning and Service Area (PSA)

Table 1.3

City/Town	60-64	65-74	75-84	85+	60+	65+	All Ages	% 60+	% 65+	% 85+	Boomer Population Ages 35-44	Boomer Population Ages 45-54
Acushnet	434	817	561	136	1,948	1,514	10,161	19.20	14.90	1.34	1,793	1,567
Dartmouth	1,215	2,300	1,862	601	5,978	4,763	30,666	19.50	15.50	1.96	4,613	4,540
Fairhaven	710	1,354	1,263	533	3,860	3,150	16,159	23.90	19.50	3.30	2,621	2,324
Gosnold	5	8	2	1	16	11	86	18.60	12.80	1.16	14	17
Marion	255	442	333	132	1,162	907	5,123	22.70	17.70	2.58	780	871
Mattapoisett	316	570	342	131	1,359	1,043	6,268	21.70	16.60	2.09	1,045	1,069
New Bedford	3,514	7,205	6,204	2,239	19,162	15,648	93,768	20.40	16.70	2.39	13,541	11,191
Rochester	154	194	147	38	533	379	4,581	11.60	8.30	0.83	858	895
Total: Coastline	6,603	12,890	10,714	3,811	34,018	27,415	166,812	19.70	15.25	1.95	25,265	22,494
Statewide	236,405	427,830	315,640	116,692	1,096,567	860,162	6,349,097	17.30	13.50	1.84	1,062,995	873,353

Source: All data extracted from Census 2000 unless otherwise noted
 Population Estimates *State and County QuickFacts*; *Population of Massachusetts Cities and Towns*.

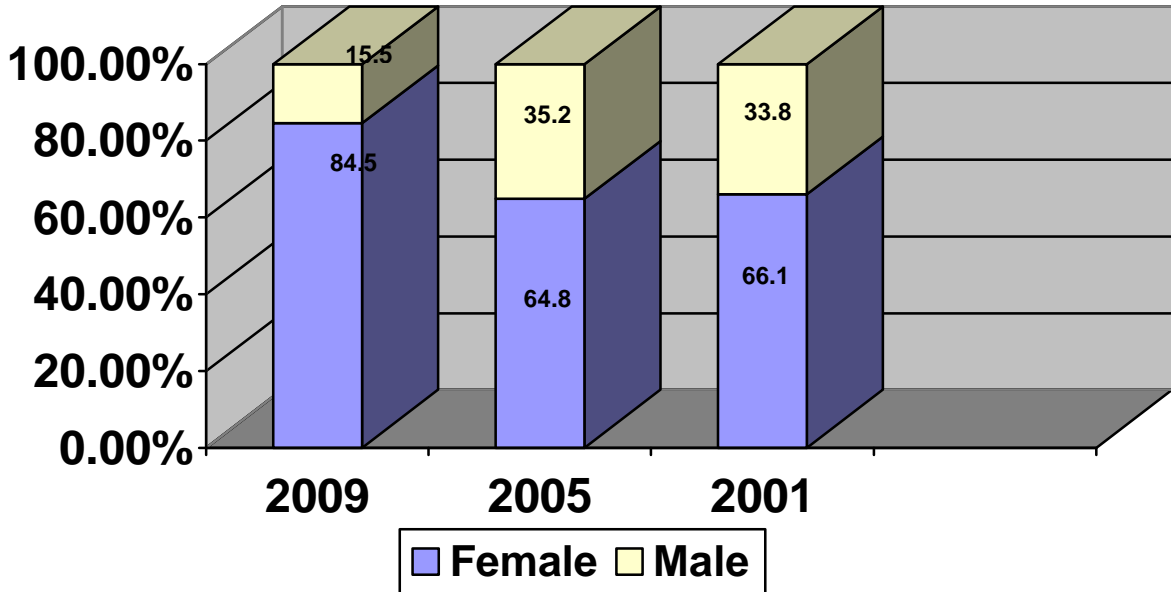
Age 60 + by Race and Town

Table 1.4

City /Town	White Alone	Black or African American Alone	American Indian Alaskan Native Alone	Asian Alone	Native Hawaiian & Pacific Islander Alone	Some Other Race Alone	2+ Races	Total Elders Age 60+	Hispanic Latino	White Alone Not Hispanic	Minorities	% Minorities
Acushnet	1,920	4	4	0	0	4	16	1,948	8	1,914	34	1.7%
Dartmouth	5,785	33	7	29	2	64	58	5,978	25	5,768	210	3.5%
Fairhaven	3,754	14	4	16	1	46	25	3,860	14	3,744	116	3.0%
Gosnold	16	0	0	0	0	0	0	16	0	16	0	0.0%
Marion	1,059	22	1	4	2	51	23	1,162	4	1,056	106	9.1%
Mattapoisett	1,322	9	1	6	0	12	9	1,359	3	1,319	40	2.9%
New Bedford	16,923	487	60	54	4	975	659	19,162	500	16,670	2,492	13.0%
Rochester	509	7	2	2	0	11	2	533	1	508	25	4.7%

Source: U.S. Census Bureau 2000, unless otherwise noted.

Gender Differences in the 60 + Population Responding to the Survey



(N=213)

Despite only marginally outnumbering men in actual population, 85.5% of those randomly selected for the survey were women.

As of 2007, the U.S. Census estimates that 3,126,493 residents in Massachusetts are men, compared to women at 3,323,262. Males outnumbered females through age 41. Starting at age 42, women outnumbered men. At 85 and older, there were more than twice as many women as men.

Gender Comparison (all ages) Estimated 2007

Table 1.6

Towns/ City	Men	Percentages	Women	Percentages
Acushnet	5,113	49.0%	5,330	51.0%
Dartmouth	15,439	49.4%	15,802	50.6%
Fairhaven	7,611	47.2%	8,513	52.8%
Gosnold	48	58.1%	36	41.9%
Marion	2,506	48.0%	2,711	52.0%
Mattapoisett	3,088	47.9%	3,359	52.1%
New Bedford	43,268	47.1%	48,581	52.9%
Rochester	2,616	50.1%	2,602	49.9%
Commonwealth	3,126,493	48.4%	3,323,262	51.5%

Note: Data is based on an 8-year average.

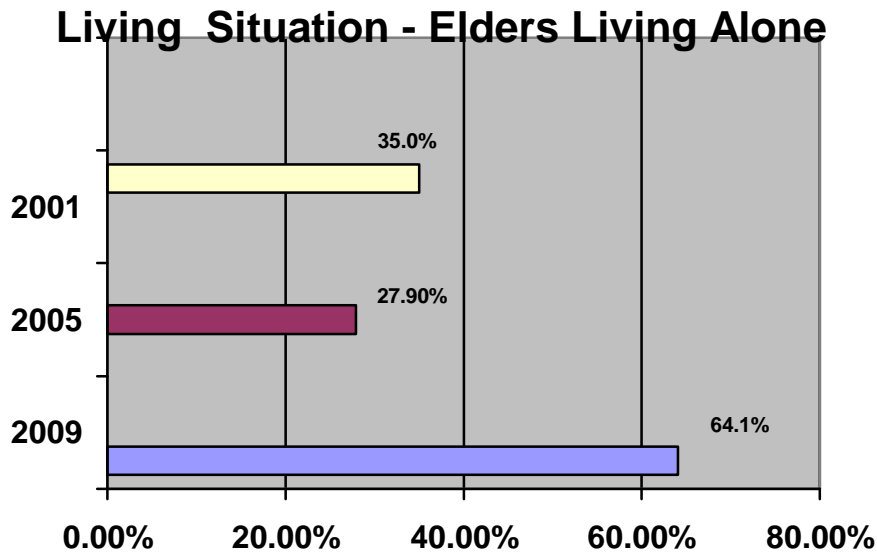
Reference population: This data refers to the civilian non-institutionalized population.

Source: 2009, 2005, 2001 Needs Assessment of Older People – Coastline Elderly Services, Inc.

U.S. Census Bureau: Population Estimates and Projections

Older Americans 2008: Key Indicators of Well-Being: Federal Interagency Forum on Aging Related Statistics.

www.municipedia.com



Elders responding to the 2009 survey said 64.1% live alone, (N= 209), compared to 27.9% in 2005 (N=252) and 35% in 2001 (N=197).

Throughout the nation, about 30.2% (10.8 million) of all non-institutionalized persons in 2007 lived alone (7.9 million women, 2.9 million men). They represented 38.6% of older women and 19.0% of older men. The proportion living alone increases with advancing age. Among women aged 75 and over, for example, half (49%) lived alone.

One sub-population of elderly may be most likely to use formal services - individuals who live alone and have no children or siblings.

Researchers have estimated that 1.2 million people aged 65 or over will be in that status in the year 2020, up from 682,000 in 1990.

Note: Data is based on an 8-year average.
Reference population: This data refers to the civilian non-institutionalized population.
Source: 2009, 2005, 2001 Needs Assessment of Older People – Coastline Elderly Services, Inc.
U.S. Census Bureau: *Population Estimates and Projections; Demographics and the Economy*
Older Americans 2008: *Key Indicators of Well-Being*; Federal Interagency Forum on Aging Related Statistics.
Administration on Aging – U.S. Department of Health and Human Services; *A Profile of Older Americans: 2008*

Housing Status

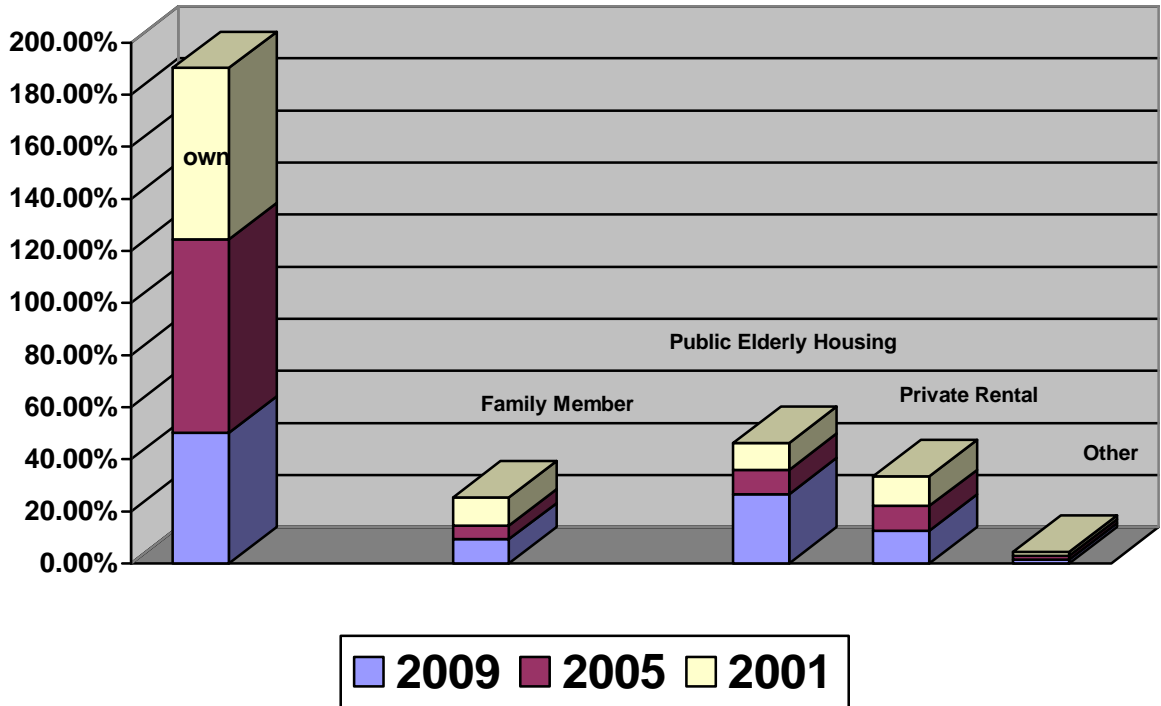


Table 1.7

	2009 N=209	2005 N=202	2001 N=252
Living in own home	50.2%	74.3%	65.8%
Living With a Family Member	9.2%	5.4%	10.7%
Living in Public Elderly Housing	26.6%	9.4%	10.3%
Living in Private Rental	12.6%	9.4%	11.5%
Other	1.4%	1.5%	1.5%

For elders between the ages of **75-79**, the 2009 survey revealed that 12.7% of elders in Coastline’s region live in a place they own; 2.3% live with a family member; 4.2% live in public elderly housing, and 3.3% live in private rental housing.

In addition to frailty and need for assistance with activities of daily living, elders in this region lack the disposable income which certainly contributes to the maintenance of the home and other essentials. In this report, 14.3% of elders said they skipped necessary home repairs due to a shortage of money.

Note: Data is based on an 8-year average.

Reference population: This data refers to the civilian non-institutionalized population.

Source: 2009, 2005, 2001 *Needs Assessment of Older People* – Coastline Elderly Services, Inc.

U.S. Census Bureau: *Population Estimates and Projections*

Older Americans 2008: *Key Indicators of Well-Being*: Federal Interagency Forum on Aging Related Statistics

Number of people living in the household

The survey asked respondents to identify the number of individuals who were living in the home. The 2009 survey revealed that 27.4% of elders were living in a two-person household, compared to 9.1% in 2005.

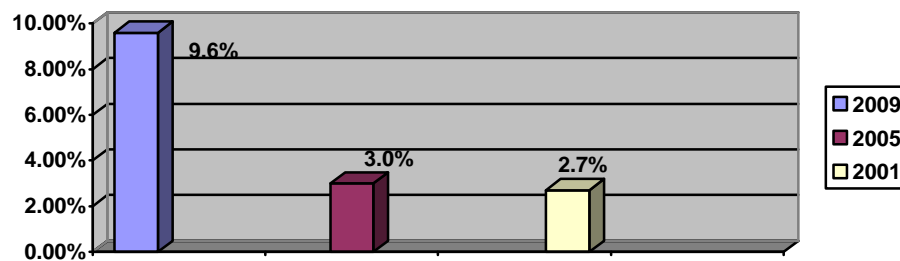
Those who were living in a household comprised of four individuals had seen an increase from 0.5% in 2005 to 4.1% in 2009.

Table 1.8

	2009 N =73	2005 N=197	2001 N=251
Living with one other person	58.9%	58.4%	49.0%
Living with two people	27.4%	9.1%	10.3%
Living with three people	9.6%	3.0%	2.7%
Living with four people	4.1%	0.5%	1.5%

Indicator 6

Increase in the number of people in the household



In 2009, those who were living in the household with three people had seen an increase up to 9.6%, compared to 3.0% in 2005 and 2.7% in 2001.

Economic conditions, health status, and the availability of caregivers are contributing factors that may determine the living arrangements of America's older population

Note: Data is based on an 8-year average.

Reference population: This data refers to the civilian non-institutionalized population.

Source: 2009, 2005, 2001 *Needs Assessment of Older People* – Coastline Elderly Services, Inc.

U.S. Census Bureau: Population Estimates and Projections

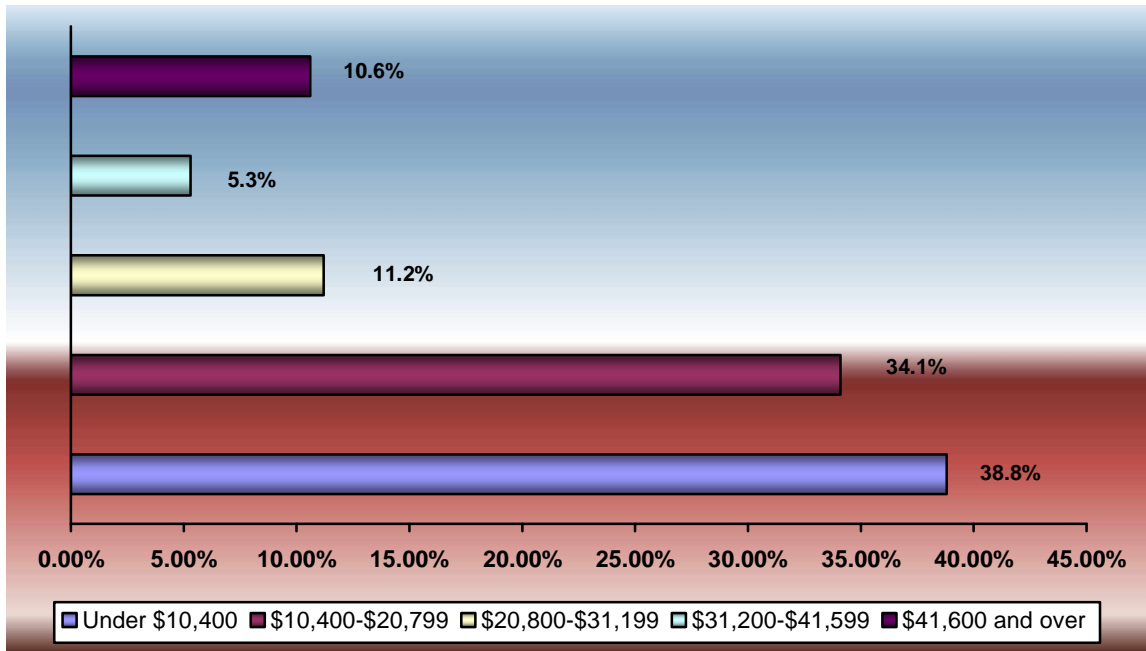
Older Americans 2008: *Key Indicators of Well-Being*: Federal Interagency Forum on Aging Related Statistics.

Household Income

The Rate of Poverty is defined as a one-person household with an annual income of \$10,400 or below in 2008, or a two-person household with an annual income of \$14,000 in 2008.

In the chart below, 39% of our elders who were surveyed said their annual income was \$10,400 annually.

Indicator 7



(N=170)

Of the **75-79** year old respondents to this question, 7.0% of elders had a household income of \$10,400; 8.9% reported a household income of \$20,799 and 2.3% said their household income was \$31,199. Only .5% reported an income of \$41,600.

People identified as living in poverty are at risk of having inadequate resources for food, housing, health care, and other needs.

Reference population: This data refers to the civilian non-institutionalized population.
Source: 2009, 2005, 2001 *Needs Assessment of Older People* – Coastline Elderly Services, Inc.
U.S. Census Bureau: Population Estimates and Projections
Older Americans 2008: *Key Indicators of Well-Being*: Federal Interagency Forum on Aging Related Statistics

2008 Health and Human Services Poverty Guidelines

These guidelines vary by family size and are updated annually to account for changes in the cost of living (as measured by the change in the average annual value of the Consumer Price Index or CPI-U).

The 2008 poverty guidelines represent income standards expressed in 2007 dollars (the reference to “2008” in the 2008 guidelines is to the year of issuance).

The 2008 Health and Human Services Poverty Guidelines were used to determine poverty levels for the 2009 Needs Assessment study. A copy of the 2009 Health and Human Services Poverty Guidelines may be found in the Appendices.

Table 1.9

Persons in Family or Household	48 Contiguous States and D.C	Alaska	Hawaii
1	\$10,400	\$13,000	\$11,960
2	14,000	17,500	16,100
3	17,600	22,000	20,240
4	21,200	26,500	24,380
5	24,800	31,000	28,520
6	28,400	35,500	32,660
7	32,000	40,000	36,800
8	35,600	44,500	40,940
For each additional person, add	3,600	4,500	4,140

Massachusetts ranks 41st with 10.0% of the population below the poverty level. Poverty rates differ by age and sex among the older population nationwide.

Older women (12 %) were more likely than older men (7%) to live in poverty .

Nationwide, about 3.6 million elderly persons (9.7%) were below the poverty level in 2007.

Source: Federal Register, Vol.73, No. 15, January 23, 2008, pp.3971-397
 Older Americans 2008: *Key Indicators of Well-Being*: Federal interagency Forum on Aging Related Statistics
 Administration on Aging: U.S. Department of Health and Human Services: *A Profile of Older Americans: 2008*
 U.S. Census Bureau 2007

Labor Force Participation

Labor force participation is measured by the percentage of a group that is in the labor force – that is either working (employed) or actively looking for work (unemployed).

According to the 2009 survey, 77% of Coastline’s elders are retired and not looking for work.

Of the population between the ages of 75-79, 83% are retired and no longer in the work force; 8.5% work between 20 to 35 hours per week and 8.5% work less than 20 hours per week.

The 2009 survey also revealed that 3.9% of elders also work less than 20 hours per week.

Table 2.0

Employment Status	2009 N=181	2005 N=192	2001 N=223
Looking for work	2.2%	1.6%	1.3%
Not Looking	77.3%	74.5%	80.2%
Work 35 hours per week	7.2%	11.5%	8.9%
Work part-time	9.4%	12.5%	9.4%

Data for 2007 indicated that 5.8 million (16.0%) Americans age 65 and over were in the labor force (working or actively seeking work), including 3.2 million men (20.5%) and 2.6 million women (12.6%) throughout the nation.

Note: Data is based on an 8-year average.

2009, 2005 and 2001 Needs Assessment of Older People- Coastline Elderly Services, Inc.

U.S. Census Bureau: *State & County QuickFacts*

Current Population Survey, labor force statistics: Bureau of Labor Statistics

Caregiving

Survey respondents were queried on their caregiver status. The survey identified 11.3% who are currently providing caregiving to another elder or an adult with a disability.

Table 2.1

Caregiving	Percentage providing caregiving
Caring for an elder / adult with a disability.	11.3%
Grandparent or relative caregiver age 55 years and older responsible for the care of a child 18 years or younger.	2.5%
Providing unpaid assistance to another adult	8.3%
Not caring for anyone	77.9%

(N=196)

CAREGIVING

A focus group was conducted by the Family Caregiver Support Program Coordinator Libby Costa.

Caregivers identified their concerns and issues in their caregiving role. Here is what they said as the top 5 concerns:

1. Time Management: They expressed concern that there just wasn't enough time for everything because of the time spent with caregiving, and not enough time for themselves.
2. Eating properly, getting exercise, or just socializing with friends.
3. Finding sufficient help with caring for their "loved one," and lack of family members to assist.
4. Spouses identified a general lack of understanding from the other and often times were made to feel guilty about their caregiving role.
5. Having to work full-time and care for a parent and children simultaneously.

Additionally, caregivers also expressed their desire to be educated on a variety of issues, such as:

- a. Learning more about behavior management and stress reduction.
- b. Coping with anger and guilt
- c. Bathing and dressing someone who gets agitated
- d. Disease progression and stages
- e. Medications and research
- f. Home activities and stimulation for spouse
- g. How to do it all and remain healthy, and
- h. Legal and financial issues.

Caregivers were also asked the question: What do you see as missing in the community in caring for someone with a memory impairment?

Their responses were:

- Not enough support groups
- Caregivers expressed that they need a walking track in a safe enclosure for elders with dementia.
- Caregivers said they needed continuous respite, someone to check on their parents daily for meds and meal reminders.
- They also spoke about the need for more doctors who understood dementia.

Stakeholders

Coastline conducted a focus group with our stakeholders, the Advisory Council of the Area Agency on Aging, to gather their input on what they perceived as needs in the community.

Participants in this focus group included:

Joe Daly,	Marion
Linda Morad,	New Bedford
Maria Connor,	Dartmouth
Jacqueline Coucci,	New Bedford
Will Herrup,	New Bedford
Helena S. Marques,	Acushnet
Rosa Farizo,	Acushnet
Walter Murphy,	New Bedford
Sharon Lally,	Rochester
Karen Maciulewicz,	New Bedford
Carol Almeida-Fortes,	New Bedford
Connie Desbiens;	West Dartmouth
Krisanne Sheedy,	Fairhaven
Hamish Graven,	Marion
Rona Trachtenberg,	Fairhaven
Marjorie Jenney,	New Bedford
Mary Anne Mont,	New Bedford
Stanley Ociesa,	New Bedford

Below are their concerns:

1. *The high cost of fuel:* Elders need additional help with purchasing fuel.
2. Housing issues related to:
 - (a) *Foreclosures:* Elders who reside in apartments are being forced out on the streets because the apartments which are owned by landlords are being foreclosed on.
 - (b) *Evictions:* Elders are being asked to vacate the premises because of their inability to pay the rent.
 - (c) *Bankruptcy:* Due to increasing debt. and their inability to pay for essentials, there is an increase in elder bankruptcy.
3. *Lack of available transportation:* Due to inadequate transportation services throughout the Greater New Bedford area, elders have great difficulty obtaining transportation. For those who travel to Boston for medical appointments, the cost becomes exorbitant because they have to use taxi cabs.
4. *High cost of gas :* For those who own a vehicle they cannot pay the price for the high cost of gasoline and are limiting the number of trips they make.
5. *Decreased finances:* Elders are unable to purchase food / prescription.
6. *Advocacy for elders :* Often times elders go alone to a medical appointment but do not understand what the doctor said about his or her health and treatment.

Lesbian, Gay, Bisexual and Transgender Elders

To ensure outreach activities to Lesbian, Gay, Bisexual and Transgender (LGBT) elders, Coastline conducted a focus group to garner input from this target population. Led by Joan Stratton, MSW, LGBT elders voiced their concerns in identifying areas of interests.

Chief among their concerns was the need to educate the Councils on Aging about LGBT issues. The LGBT elders expressed feeling “unsafe” at events sponsored by the COAs because they were fearful of how others would react to the knowledge of their sexual orientation.

LGBT elders, like all elders in this survey, identified lack of assistance with home repairs as one of their primary needs. (The survey revealed that 14.3% of all elders (N=196) skipped home repairs due to a shortage of money).

This population of elders also identified the need for a “safe place” where they could go for socialization; creation of activity groups; and trips to LGBT friendly destinations. Participants at the focus group expressed feelings of isolation, where most of the participants didn’t know another LGBT elder except their partner. All expressed the desire to have available a local support group which would provide the impetus in establishing contact with others like themselves and creating the arena where they could share their triumphs and tribulations.

The number and proportion of LGBT elders will increase significantly over the next few decades, along with the overall elder population. By 2030, one in five Americans will be 65 or older, and roughly 4 million of these will be lesbian, gay bisexual or transgender.

Note: Four percent of same-sex couples in Massachusetts have at least one partner who is age 65 or older, compared to 19% of married couples. According to the National Gay and Lesbian Task Force, three million Americans over 65 are gay, lesbian, bisexual, or transgender, based on a range of 3 to 8% of the population.

Sources: U.S. Census Bureau, *Unmarried Partner Household by Sex of Partners*
Gary J. Gates, MV Lee Badgett, Kate Chambers, Jennifer Macomber, The Williams Institute and the Urban Institute, *Adoption and Foster Care by Gay and Lesbian Parents in the United States (2007)*.

Community Profile

2000 and 2007

Table 2.2

Towns / City	Total Population Estimated (2007)	% of Residents Below Poverty Level Estimated 2007	Total population in 2000	% of Residents Below Poverty Level in 2000	Median Household i ncome Estimated 2007	Median Household income in 2000	Population change since 2000	Unemployment Rate in 2007	Bachelor's Degree or Higher 2007
Acushnet	10,443	3.8%	10,161	1.9%	\$ 64,997	\$ 51,500	+3.0%	2.9%	13.0%
Dartmouth	31,241	4.5%	30,666	2.8%	\$ 64,040	\$ 50,742	+1.8%	12.0%	24.6%
Fairhaven	16,124	8.3%	16,159	6.5%	\$ 52,623	\$ 41,696	+0.1%	3.9%	16.9%
Gosnold	84	23.5%	86	23.5%	\$ 29,416	\$22,344	-1.0%	0.0%	20.7%
Marion	5,217	4.6%	5,123	3.5%	\$ 78,318	\$61,250	+2.1%	2.2%	49.3%
Mattapoisett	6,447	3.6%	6,268	2.8%	\$ 74,758	\$58,466	+2.7%	1.8%	42.9%
New Bedford	91,849	22.6%	93,768	17.3%	\$ 34,607	\$ 27,569	-1.8%	8.7%	10.7%
Rochester	5,218	3.1%	4,582	2.4%	\$ 80,925	\$63,289	+13.6%	4.6%	27.7%
State	6,449,755	10.0%	6,349,097	6.7%	\$ 62,365	\$50,502	+ 1.6%	6.3%	27.2%

Source: U.S. Census Bureau 2000- 2007 Population Estimates
www.city-data.com

Appendix 1

2009 Health and Human Services Poverty Guidelines

Table 2.4

Persons in Family or Household	48 Contiguous States and DC	Alaska	Hawaii
1	\$10,830	\$13,530	\$12,460
2	14,570	18,210	16,760
3	18,310	22,890	21,060
4	22,050	27,570	25,360
5	25,790	32,250	29,660
6	29,530	36,930	33,960
7	33,270	41,610	38,260
8	37,010	46,290	42,560
For each additional person, add	3,740	4,680	4,300

Source: *Federal Register*, Volume 14, January 23, 2009, pp. 4199-4201



COASTLINE ELDERLY SERVICES, INC.
AREA AGENCY ON AGING ♦ AGING SERVICES ACCESS POINT

1646 Purchase Street, New Bedford, Massachusetts 02740-6819

TEL: 508-999-6400 • FAX: 508-993-6510 • TTY: 508-994-4265

October 8, 2008

Dear Friend:

Coastline Elderly Service, Inc. the region's Area Agency on Aging, is conducting a Needs Assessment survey to gather information on the needs of older people. Our purpose is to improve elderly services and fulfill federal requirements.

Your response is very important but participation in this survey is entirely voluntary. You need not provide your name. Your refusal to participate will not affect any services you are receiving or may apply for in the future.

Please mail your completed survey in the enclosed self-addressed stamp envelope by Friday, October 31, 2008.

Should you have any questions, you may contact Ann McCrillis, Area Agency on Aging Planner, at 508-999-6400, ext. 160.

Thank you.

Sincerely,

Charles Sisson
Executive Director

Appendix 3

The 2009 NEEDS ASSESSMENT OF OLDER PEOPLE

Coastline Elderly Services, Inc. wants to assess the status of all persons aged 60 and over, including caregivers. To ensure that you are not under-represented, please take a few minutes to complete this questionnaire. Your answer will help us better serve older people in our area. Thank you.

1. AGE:

Which best portrays your age group?

- | | | | |
|--------------------------------|--------------------------------|--------------------------------|--------------------------------|
| 18-34 <input type="checkbox"/> | 45-49 <input type="checkbox"/> | 60-64 <input type="checkbox"/> | 75-79 <input type="checkbox"/> |
| 35-39 <input type="checkbox"/> | 50-54 <input type="checkbox"/> | 65-69 <input type="checkbox"/> | 80-84 <input type="checkbox"/> |
| 40-44 <input type="checkbox"/> | 55-59 <input type="checkbox"/> | 70-74 <input type="checkbox"/> | 85+ <input type="checkbox"/> |

2. GENDER:

Male Female

3. RACE/ ETHNICITY:

Are you:

- Asian
- American Indian or Alaska Native
- Black or African American
- Hispanic, Spanish, or Latino
- Native Hawaiian / Pacific Islander
- White, non-Hispanic

4. HOUSING STATUS:

Where do you live?

- A place I own
- Family member's home
- Public elderly housing
- Private rental housing
- Other (please specify) _____

5. Do you live alone? YES No

6. If you do not live alone, how many people are living with you?

7. Which best portrays your total annual household income?

- Under \$10,400
- \$10,400-\$20,799
- \$20,800-\$31,199
- \$31,200-\$41,599
- \$41,600 and over

8. Which best portrays your employment status?

- Not employed, but looking for work
- Retired or no longer in the labor force
- Currently work 35 or more hours per week
- Currently work between 20 and 35 hours per week
- Currently work less than 20 hours per week

9. CAREGIVING:

- Are you currently caring for an elder or an adult with a disability?
- Are you a grandparent or relative caregiver age 55 years and older responsible for the care of a child 18 or younger?
- Do you provide unpaid assistance to another adult (typically a family member or friend) for his / her personal needs?
- No. I am not caring for anyone

10. In the last 12 months, have you skipped any of the following because of a shortage of money?

- | | | | |
|---------------------|--------------------------|---------------------------|--------------------------|
| Food | <input type="checkbox"/> | Prescription drug | <input type="checkbox"/> |
| Gas for car | <input type="checkbox"/> | Paying for transportation | <input type="checkbox"/> |
| Home repairs | <input type="checkbox"/> | Medical appointment | <input type="checkbox"/> |
| Utilities | <input type="checkbox"/> | Social gathering | <input type="checkbox"/> |
| (heat, phone, etc.) | <input type="checkbox"/> | Rent or mortgage | <input type="checkbox"/> |

10. SERVICE NEEDS

Kindly tell us in which areas you need assistance.

	<i>First Priority</i>	<i>Second Priority</i>	<i>Third Priority</i>
Finding affordable housing	<input type="checkbox"/>	<input type="checkbox"/>	<input type="checkbox"/>
Finding caregiving/support	<input type="checkbox"/>	<input type="checkbox"/>	<input type="checkbox"/>
Coping with depressing mood	<input type="checkbox"/>	<input type="checkbox"/>	<input type="checkbox"/>
Coping with memory loss/confusion	<input type="checkbox"/>	<input type="checkbox"/>	<input type="checkbox"/>
Coping with abuse, neglect and mistreatment	<input type="checkbox"/>	<input type="checkbox"/>	<input type="checkbox"/>
Coping with safety and security	<input type="checkbox"/>	<input type="checkbox"/>	<input type="checkbox"/>
Finding employment	<input type="checkbox"/>	<input type="checkbox"/>	<input type="checkbox"/>
Finding education/learning courses	<input type="checkbox"/>	<input type="checkbox"/>	<input type="checkbox"/>
Finding health care information	<input type="checkbox"/>	<input type="checkbox"/>	<input type="checkbox"/>
Improving food and nutrition	<input type="checkbox"/>	<input type="checkbox"/>	<input type="checkbox"/>
Finding information/assistance to avoid foreclosure and/or eviction	<input type="checkbox"/>	<input type="checkbox"/>	<input type="checkbox"/>
Finding legal assistance	<input type="checkbox"/>	<input type="checkbox"/>	<input type="checkbox"/>
Finding leisure, recreation and fitness programs	<input type="checkbox"/>	<input type="checkbox"/>	<input type="checkbox"/>
Finding long-term care information and assistance	<input type="checkbox"/>	<input type="checkbox"/>	<input type="checkbox"/>
Managing money/finances	<input type="checkbox"/>	<input type="checkbox"/>	<input type="checkbox"/>
Finding medical escort	<input type="checkbox"/>	<input type="checkbox"/>	<input type="checkbox"/>
Finding programs /services for older lesbian, gay, bisexual and transgendered elders	<input type="checkbox"/>	<input type="checkbox"/>	<input type="checkbox"/>
Finding transportation	<input type="checkbox"/>	<input type="checkbox"/>	<input type="checkbox"/>
Finding volunteer opportunities	<input type="checkbox"/>	<input type="checkbox"/>	<input type="checkbox"/>

Thank you for your participation in the 2009 Needs Assessment of Older People